

# 刮刀裁切机

## Doctor Blade Cutter

刮刀裁切机，可精确裁切刮刀长度，使刮刀裁切操作更轻松、高效、安全。标准的刮刀长度可节约刮刀材料，平整的刮刀断面可改善辊筒使用寿命。标准长度为800/1200/1500毫米，也可根据需求定制长度。

blade cutter makes it easy to cut doctor blade with precise length, blade handling become more simple, efficient and safe. Standard length saves blade materials, perfect blade ends improves roller life. Standard lengths are 800/1200/1500 mm, other lengths available upon request.

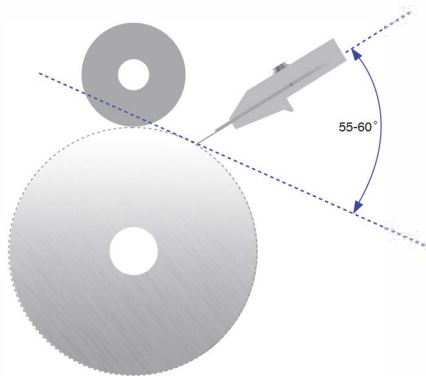
**裁切刀 Cutter**  
裁切刀使用高强度工具钢，轻松切断厚至0.5毫米的各种材料刮刀，尺寸精确，断面平整。  
Knives made of high strength tool steel, cuts the blade up to 0.5mm thickness easily, with precise length and perfect ends.

**标尺 Ruler**  
用以设置刮刀长度，标准长度为800/1200/1500毫米，也可定制其他长度  
For setting blade length, standard length 800/1200/1500 mm, other lengths on request

**刮刀盒固定架 Blade Cassette**  
简单易用，适合多种刮刀盒尺寸  
Easy to use and adapt to other cassettes

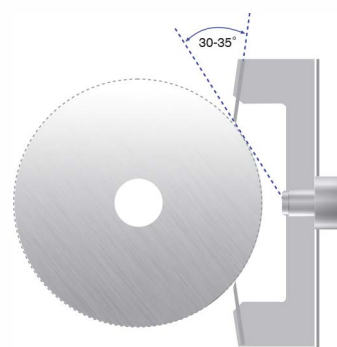
**刮刀宽度 Blade Thickness**  
刮刀宽度8-80毫米  
Blade widths from 8 to 80 mm

**刮刀终点挡板 End stops**  
位置可调，用以设置需裁切的刮刀长度  
Adjustable to match the required blade length



**凹印刮刀角度**  
Doctoring angle for gravure printing

凹版印刷刮刀角度通常为55-60度。确保均匀刮墨效果的同时将刮刀的磨损降到最低。  
The average doctoring angle for gravure is approx. 55-60 degree, this gives a minimum wear to the doctor blade and an excellent ink distribution.



**柔版印刷刮刀角度**  
Doctoring angle for flexo printing

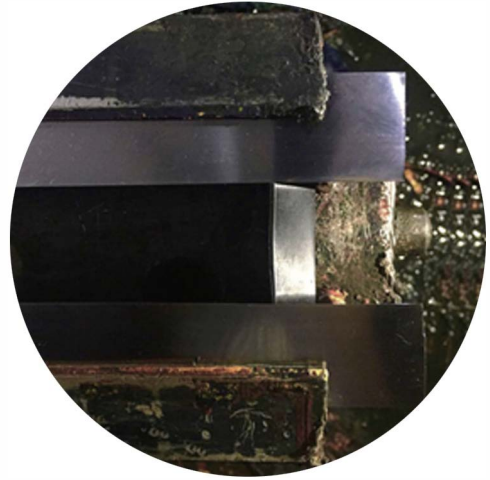
柔版印刷最佳刮刀角度通常为30-35度，确保均匀刮墨效果的同时对刮刀的磨损降到最低。  
The optimal blade angle for flexo printing is approx. 30-35, this gives a minimum wear to the doctor blade and an excellent ink distribution.



## 节约成本/Save cost

常用的剪刀无法确保刮刀长度裁切准确。结果通常是刮刀比实际需要的长度要长。如果每片刮刀准确长度为105厘米，每片多出2厘米，则每片刮刀损耗1.9%，如果一家凹印工厂有6台凹印设备，每台凹印设备每月使用200米，则刮刀裁切机的投资回报将少于12个月。

Cutting blade with scissors can't guarantee precise blade length. Usually blade is longer than required length. If required length is 105 cm and each blade actually 2 cm longer, then blade wastage is 1.9%. Consider one gravure printer has 6 gravure printing machines, each machine use 200 meters blade per month, then ROI of blade cutter will be less than 12 months.



## 改善性能/ Improve performance

使用剪刀剪切刮刀很容易出现卷边现象，对于使用封闭式刮墨系统的柔版印刷来说，刮刀的端面在挡墨块和网纹辊中间。如果刮刀端面不平整，则一方面影响油墨密封效果，另一方面容易在网纹辊端面磨出凹痕，降低网纹辊使用寿命。

Cutting blade with scissors easy to get curved blade edge. For flexo printing with chamber system, blade edge is between end seals and anilox roll. If the blade edge not smooth, it will affect ink containment properties, at the same time easy to scratch anilox roll thus decrease anilox roll lifespan.



## 操作安全/Safe operation

大部分刮刀材质是高弹性碳钢。锋利的刮刀刃口非常危险。刮刀裁切机具有安全稳定的操作平台，可让您的员工放心裁切刮刀，极大降低割伤风险。

Most of the doctor blade materials is high spring carbon steel, sharp blade edge is dangerous for operators. blade cutter provide a stable and safe platform for your operators to cut blade easy and fast, greatly reduce the risk of injury.



聯絡人 李志欽 0935554560  
kimerlee@gmail.com  
231 新北市新店區北宜路一段105巷4弄2-5號7樓